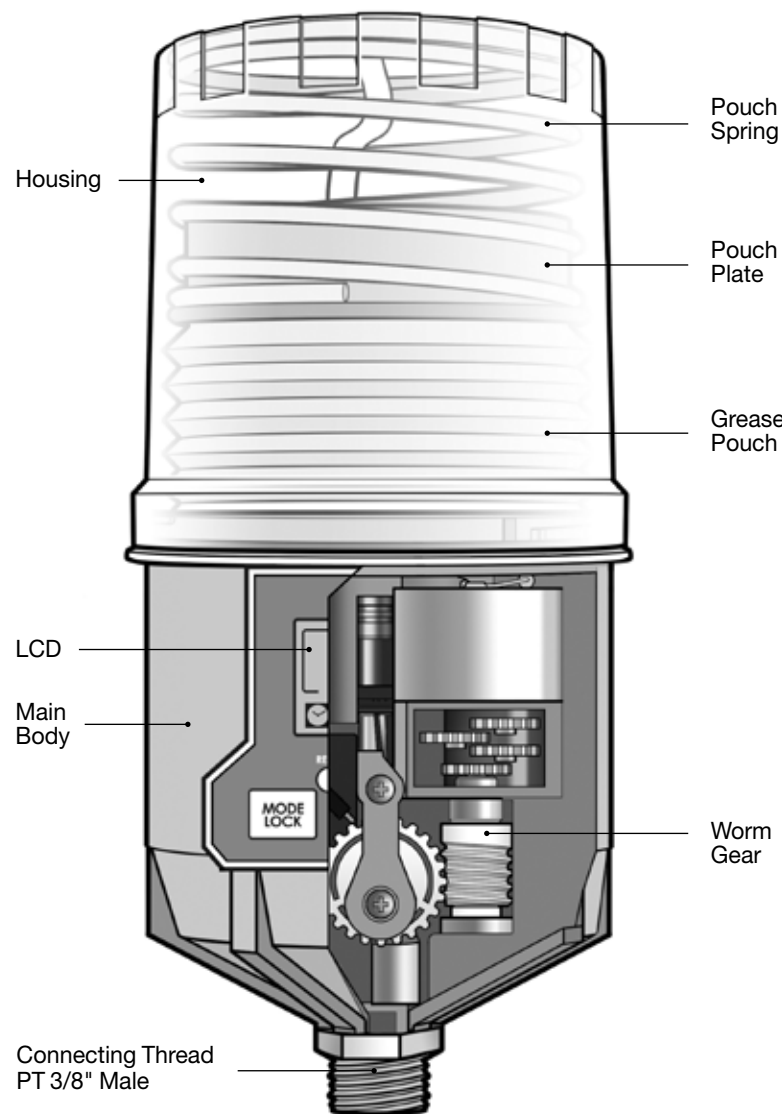
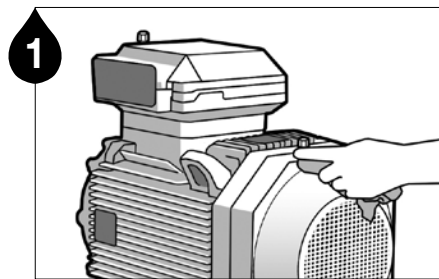


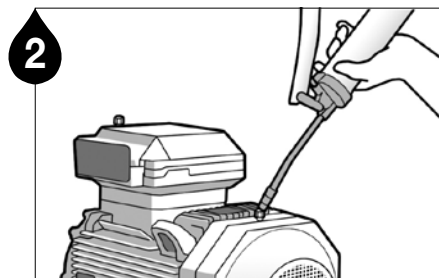
**Product Details**



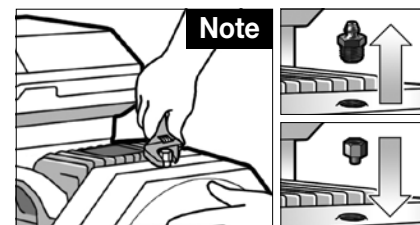
**Installation Guideline**



1 Remove contaminants around the lube point.



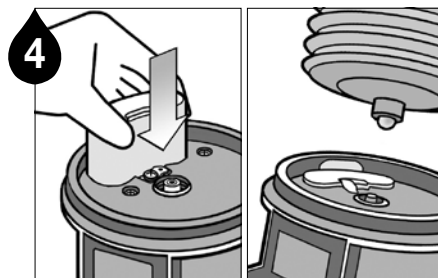
2 Ensure a clear passage using a manual grease gun. **Note1** Remove any hardened grease by purging the lube point with a manual grease gun. **Note2** The grease in the equipment and the grease contained in the unit should be the same or compatible.



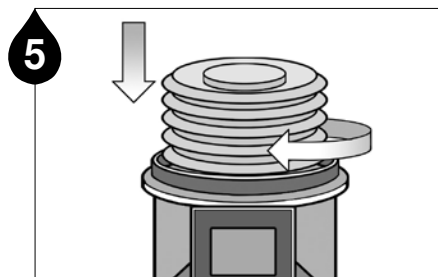
3 Remove the grease nipple and install appropriate adaptors.



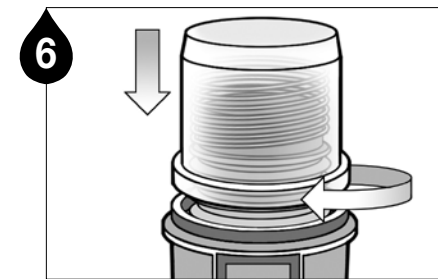
4 Check the grease pouch capacity and the service pack items (battery pack, grease pouch & dust cover).



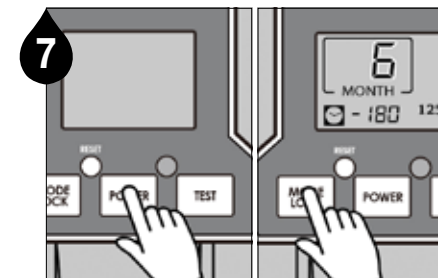
5 Insert battery pack and purge the grease pouch until grease comes out of the tip.



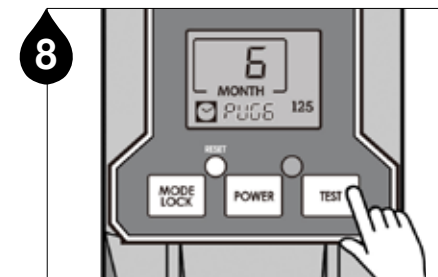
6 Carefully screw the grease pouch in by turning clockwise. Do not over tighten.



7 Refit the top housing on the unit and turn clockwise until it clicks.



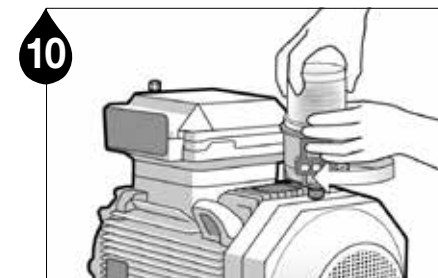
8 Press **POWER** button for 2 seconds to power on. Press **MODE** button to select dispensing period.



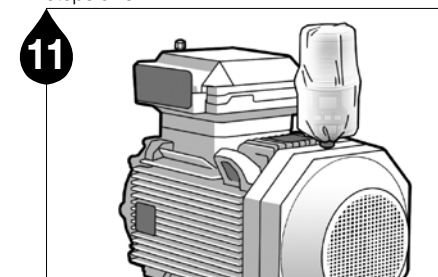
9 Press the **TEST** button for 2 seconds to run a test cycle and check for proper operation of the unit.



10 Note the installation date and the scheduled completion date of lube cycle on the lubricator using the label provided in the Service Pack for maintenance purposes.



11 Install the Pulsarlube M unit on the lube point. When the selected dispensing period has completed, replace the Service Pack following steps 3-6.



12 Install the dust cover over the lubricator for added protection.

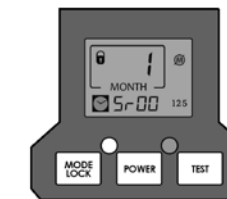
**Troubleshooting Guideline**

**5r00 (Sensor)**

**Error :** Operation on hold due to non-detection of motor sensor

**Possible Cause :** Problem with the motor sensor

**Solution :** Contact your supplier

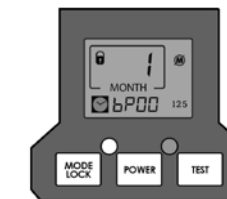


**bP00 (Backpressure)**

**Error :** Excessive backpressure indication

**Possible Cause :** Hardened grease obstructing lube point or kinked lube line

**Solution :** Purge grease into the lube point using a clean manual grease gun to eliminate possible hardened grease that may be causing an obstruction. This will alleviate excessive backpressure. Reduce lube line length if possible.

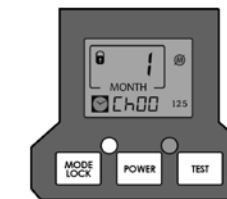


**Ch00 (Check)**

**Error :** Motor not responding

**Possible Cause :** Electric motor may not be able to activate due to possible electrical problem

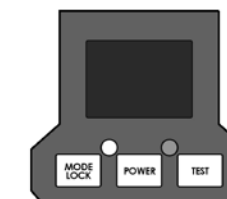
**Solution :** Contact your supplier



**Error :** Blank LCD screen

**Possible Cause :** CPU electrical malfunction or battery problem

**Solution :** Replace battery pack / Press reset button to restart the lubricator / Contact your supplier if problem persists



## Button Operation

**MODE LOCK**  
Dispensing Period  
1~12 month  
Automatic Lock Out Mode  
Press for 2 seconds to unlock (🔒)

**POWER**  
Power **ON/OFF**  
Press for 2 seconds to power unit on or off

**TEST**  
Purge Mode  
ON : Press for 2 seconds  
OFF : Short press of button  
(will stop after completion of ongoing cycle)

**RESET**  
Reset to default setting when the unit malfunctions and/or after changing the Service Pack

## LCD Display

**6**  
MONTH  
Dispensing period setting

**- 180**  
Remaining dispensing days

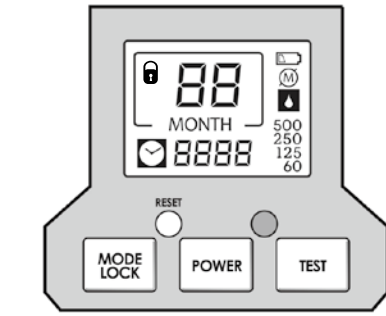
**🔒**  
Automatic Lock Out mode

**60/125**  
**250/500**  
Grease pouch capacity

**🔋**  
Low battery power

**M**  
Operation of the lubricator has been interrupted (refer to Troubleshooting Guideline)

**💧**  
Dispensing period has completed



**MODE LOCK + TEST**  
Backlight **ON/OFF**  
Hold the Mode button and then press the Test button

**📧 Ch00**  
Number of days operation has been on hold due to motor error

**📧 Sr00**  
Number of days operation has been on hold due to motor sensor error

**📧 bP00**  
Number of days operation has been on hold due to backpressure

**📧 PUG6**  
Number of remaining purge cycles

**📧 St03**  
Number of days since dispensing period has completed  
(🔒 and 📧 will also display)

**Red LED**  
LED blinks when battery is low, excessive backpressure exists, or dispensing period has completed

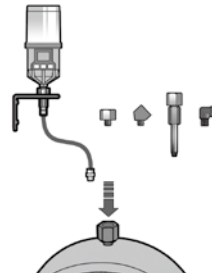
**Green LED**  
LED blinks during normal operation

## Certification



This device complies with Part 15 of the FCC Rules. Operation is subject to the following two conditions : (1) This device may not cause harmful interference, and (2) this device must accept any interference received, including interference that may cause undesired operation.

## Mounting Methods

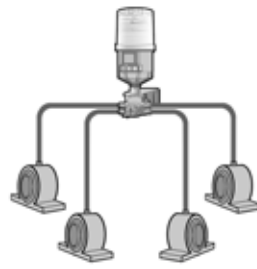


### Single Point Installation

#### Direct Mount or Remote Installation using Lube Line

Direct mount is always preferable. For applications not allowing a direct installation, remotely mount the unit using appropriate accessories and keep the distance from the lube point as short as possible.

For remote installation using a tube, use a Ø6 (1/4") tube pre-filled with the same or compatible grease as the grease contained in the unit.



### Multi-Point Installation

#### Multi-Point Remote Installation using Progressive Divider Block (2~8 Points)

Remote multi-point lubrication is available with the Pulsarlube M using a divider block. It is recommended to test the back pressure of the bearing, lube lines, and divider block after assembly using a grease gun connected to a pressure gauge. Ensure the break-off pressure is below the average operating pressure of 30bar (435psi).

## Warning

- ▶ For remote installation, keep the maximum distance at 6m (20ft) or less.
- ▶ Do not plug any open ports on the divider block. The kit or divider block must be ordered with the appropriate number of points required. For more information on the divider block, please refer to the Multi-Point Remote Installation Manual.
- ▶ Use the lithium battery pack for specific applications such as : extremely cold temperatures, any multi-point or long distance single point (greater than 10ft.) for 500ml unit.

**Shelf life and Product Warranty** Warranty is limited to original defects in material and workmanship and will not cover any collateral damage due to mishandling, abuse and /or any other inappropriate use of this product. Warranty period is 1 year from the date of purchase.

Rev.05

ISO9001/14001

**PULSARLUBE**  
The World Leader of Automatic Lubrication

**PULSARLUBE**

User Manual

Pulsarlube **M**  
Series

(60ml/125ml/250ml/500ml)



## Pulsarlube USA, Inc.

1480 Howard Street, Elk Grove Village, IL 60007, USA  
TEL:1-847-593-5300 FAX:1-847-593-5303 www.pulsarlube.com/info@pulsarlube.com