








# Troubleshooting

## 1. Guidelines

- 1-1. Malfunction
- 1-2. Alarms and Dispensing Failure

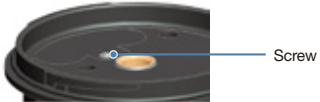
	LED Display	Possible Causes	Troubleshooting Steps
1-1	 Normal	<ul style="list-style-type: none"> <li>Electrical malfunction of CPU</li> <li>Possible contact problem (open circuit) with programming buttons on the lubricator control panel</li> </ul>	<ul style="list-style-type: none"> <li>Reset the unit.</li> <li>If technical difficulty continues, please contact your local supplier or manufacturer for further assistance.</li> </ul>
	 Malfunction	<ul style="list-style-type: none"> <li>Possible electrical malfunction of CPU or circuitry</li> </ul>	
1-2	 Flashing backlight, blinking 0	<p>Extreme backpressure caused by:</p> <ul style="list-style-type: none"> <li>Kinked lube line</li> <li>Long distance remote installation</li> <li>Small inner diameter of lube line</li> <li>Obstruction at lubepoint</li> </ul>	 →  (Activate Purge mode) <ul style="list-style-type: none"> <li>Ensure that lubricator is dispensing properly.</li> <li>Reinstall the lubricator after resolving the underlying cause of backpressure.</li> </ul>
	 Normal display but improperly dispensing	<ul style="list-style-type: none"> <li>Foreign material in the pump</li> <li>Air pockets in the pump</li> </ul>	<ul style="list-style-type: none"> <li><b>If there is foreign material in the pump.</b> Remove the foreign material using an air gun.</li> <li><b>If the pump has Air pockets.</b> Activate purge mode, then gently press down on the upper check valve using a 1.5mm pin 2-3 times to remove the air inside.</li> </ul>
	 Flashing backlight, blinking dispensing period	<ul style="list-style-type: none"> <li>When the selected dispensing period ends, LCD backlight will activate and display will blink.</li> </ul>	<ul style="list-style-type: none"> <li>Install a new service pack, or refill with oil for PLC-OL, then reset the unit.</li> </ul>

## 2. PLC-OL Precaution



For oils below ISO VG 100, place the oiler below the lube point and curl the lube line a couple of times to avoid oil leaks caused by gravity.

## 3. PLC/PLC-OL Warning



Please do not disassemble the screw shown in the picture. It may result in serious damage or malfunction of lubricator. The Pulsarlube PLC-OL480 is not a battery-operated product. If you require further information please refer to the technical information on the website.

- Warranty is limited to original defects in material and workmanship and will not cover any collateral damage due to mishandling, abuse and /or any other inappropriate use of this product.
- Warranty period is 1 year from the date of purchase.



1170 Ardmore Ave Itasca IL 60143, USA  
 TEL : 1-847-593-5300 | FAX : 1-847-593-5303 | www.pulsarlube.com / info@pulsarlube.com

ISO9001 / 14001



Rev.00

# Pulsarlube Grease & Oil Service Pack

USER MANUAL FOR BT, PLC, PLC-OL, EXP/EXPL

Grease & Oil TYPE

## General Information

### 1. Product Description



NO.	Category	Components
1	Grease pouch	Select a grease pouch capacity (60, 125, 250, or 500ml) according to the specifications of the automatic grease lubricator.
2	Battery pack	The standard specification includes an alkaline battery pack. A lithium battery pack can be selected depending on usage conditions.
3	Dust cover	Use the dust cover for extra protection against contaminants and water. For areas where discoloration from UV exposure may be a concern, a UV dust cover is available separately.
4	Memo label	Indicate the replacement and completion date on the label for easy maintenance.
5	Oil Absorbent Pad	For optimal use, replace the oil absorbent pad along with the battery pack when disassembling the product for battery pack replacement. *For PLC-OL, please purchase the oil absorbent pad separately.

### 2. Product Components by Lubricator Model

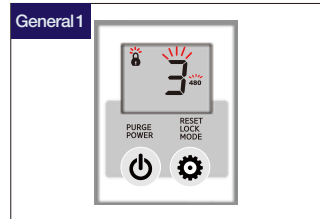
Category	Type	Components
BT, EXP, EXPL	Grease	1 Grease pouch 2 Battery pack 3 Dust cover 4 Memo label
	Oil	5 Oil Absorbent Pad
PLC	Grease	1 Grease pouch 4 Memo label
	Oil	5 Oil Absorbent Pad

- To ensure the safe operation and proper installation of the Service Pack, we strongly recommend that you read the following information carefully before use.
- If you require further information, please contact your local supplier or manufacturer.
- Technical information is subject to change without notice.

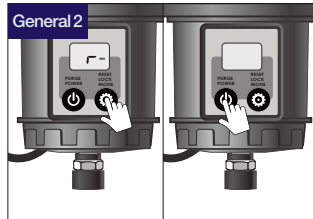
# How to Install and Use

## Service Pack Replacement Method

When the dispensing period is complete and it is time to replace the service pack, the backlight will flash and the programmed dispensing period, lock icon, and capacity will all start to blink.



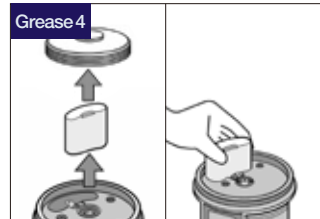
**General 1**  
If the backlight starts flashing along with all icons shown above, it is time to replace the service pack.



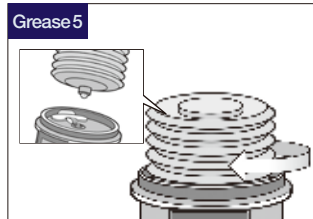
**General 2**  
Hold the MODE button for 2 seconds to unlock, then press and hold for 5 seconds to reset. The BT model requires pressing POWER to reset.



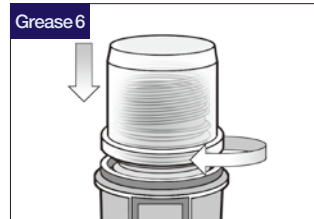
**General 3**  
Disassemble the housing from the main body.



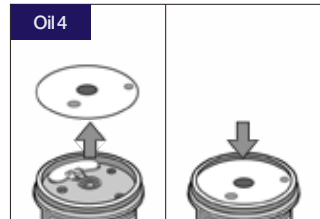
**Grease 4**  
Remove the existing grease pouch and battery pack and insert a new battery pack. \*Be careful to keep dust and other contaminants away from the pump while it's disassembled.



**Grease 5**  
Purge a small amount of grease until it is past the tip of the pouch and install straight until snug. Do not over-tighten.



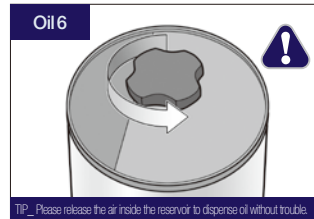
**Grease 6**  
Reinstall the housing.



**Oil 4**  
Remove the existing oil absorbent pad and replace it with a new one.



**Oil 5**  
Remove the oil reservoir lid and fill the reservoir with oil to the 500ml level.



**Oil 6**  
Turn the hand knob counter clockwise 1~2 turns before closing the lid to open the vent and relieve vacuum pressure.



**General 7**  
Press and hold the power button for 3 seconds to power on.



**General 8**  
To change the dispensing period setting: Hold the MODE button until the padlock icon disappears to unlock and then press the MODE button again to cycle through the settings.



**General 9**  
Install the provided dust cover.

# Additional Information

## 1. Buttons and LCD Display

All icons	Power	Mode	Button press instructions			Blinking
			Short press	Press for 3 seconds	Press for 5 seconds	
Buttons	Functions	Programming Instructions	LCD Indications			
	Power ON/OFF	Power ON - Press for 3 seconds to power on.	ON) (Month Type) (Interval Type)			
		Power OFF - Press for 5 seconds to power off.	OFF) 6 continuous pump cycles			
	Purge Mode	Activate: Hold the button until 'P' appears on the screen.	Lubricator returns to normal operation			
		Stop: Short press of the button to stop.	Lubricator returns to normal operation			
	Mode Setting	Short press of the MODE button to program the dispensing period. *1~12 month for MONTH type *Mode 1~6 for INTERVAL type	Normal operation			
	Unlock	Press until Lock icon 'L' disappears.	Unlocked			
	Reset	After unlocking the unit, hold the MODE button for 5 seconds. The BT model requires pressing POWER to reset.	Reset to default setting			
	Backlight	Hold down the POWER button then press MODE.	(The backlight will activate for 5 seconds.)			

## How to order

Type	Category	Product Number
Grease	Pulsarlube PLC, BT, EXP, EXPL	SV-□□□ / PL□ Grease Number (PL1,2,3...14s or OEM) Grease Capacity (60,125,250,500ml)
Oil	Pulsarlube PLC-OL	*Oil Absorbent Pads Sold Separately